



**Real-time Application
Monitoring Solution**

www.jennifersoft.com



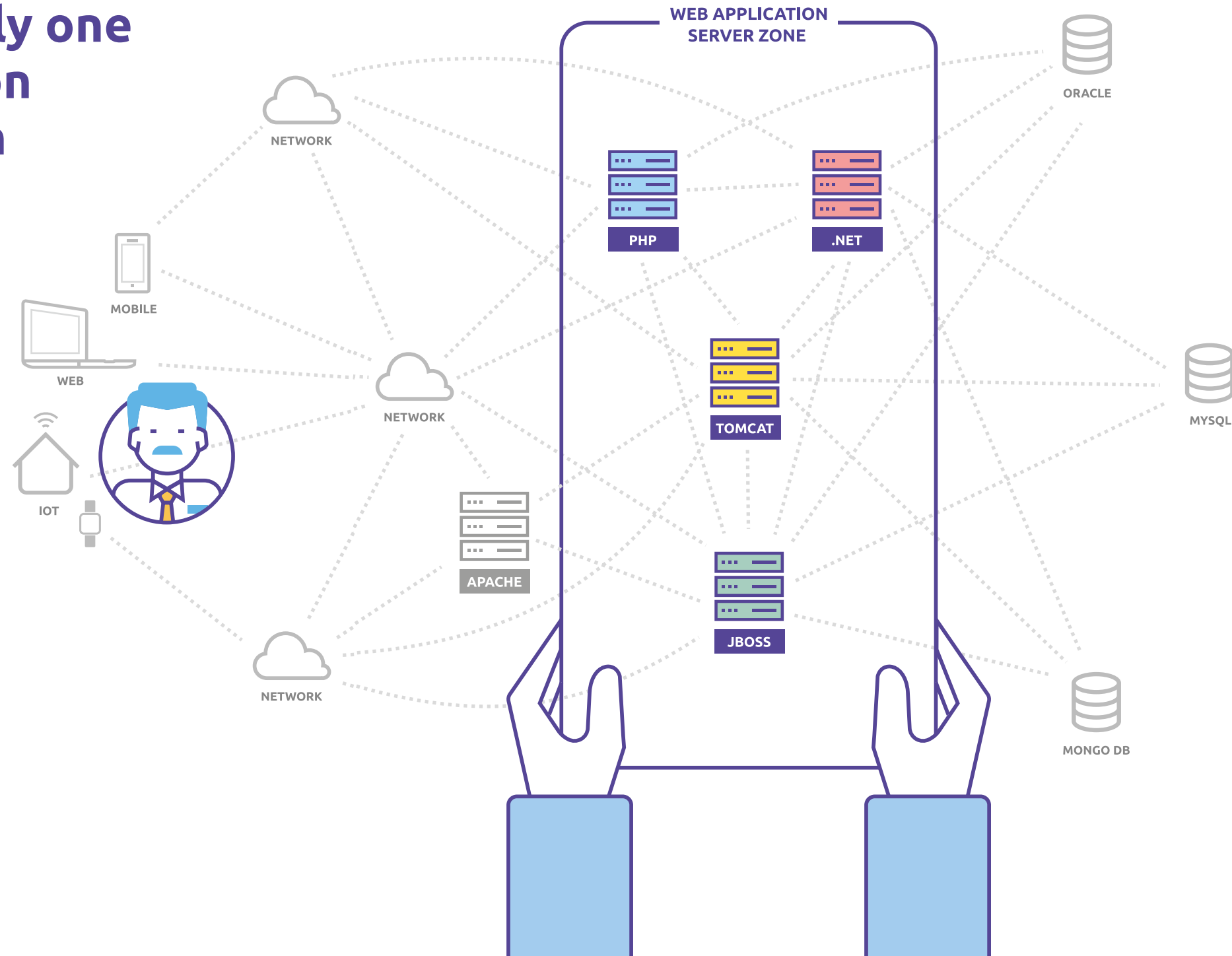
JENNIFER is the only one real-time application monitoring solution over the world.

As a way of managing the environment of web application server has been changed quickly today, Monitoring Web Application Server(JAVA, .NET, PHP) is getting more important.

Web Application Server(JAVA, .NET, PHP) resides in between end-user and back-end system, so all of transactions go through the web application server zone.

Monitoring and managing transaction being processed by this zone is the most effective way to build the stable web application system.

" Web Application Server Zone is the backbone of web application transactions processing system"



Real-Time Monitoring, Real-time Action, Improving Customer Satisfaction in Real-Time.



**What's happening to transactions?
How to find it?**

JENNIFER starts to trace every single transactions as soon as user request comes into web application server.

**What's happening inside web
application server?
How to know it?**

JENNIFER in real-time detects all of errors/exceptions of application, unexpected resource usage, bad transactions etc that affects user satisfaction, and send alert in all the way.

**What happened to transactions
just before?**

JENNIFER saves and makes a statistics all of transactions monitored in real-time. You can start data analytics whenever you want it.

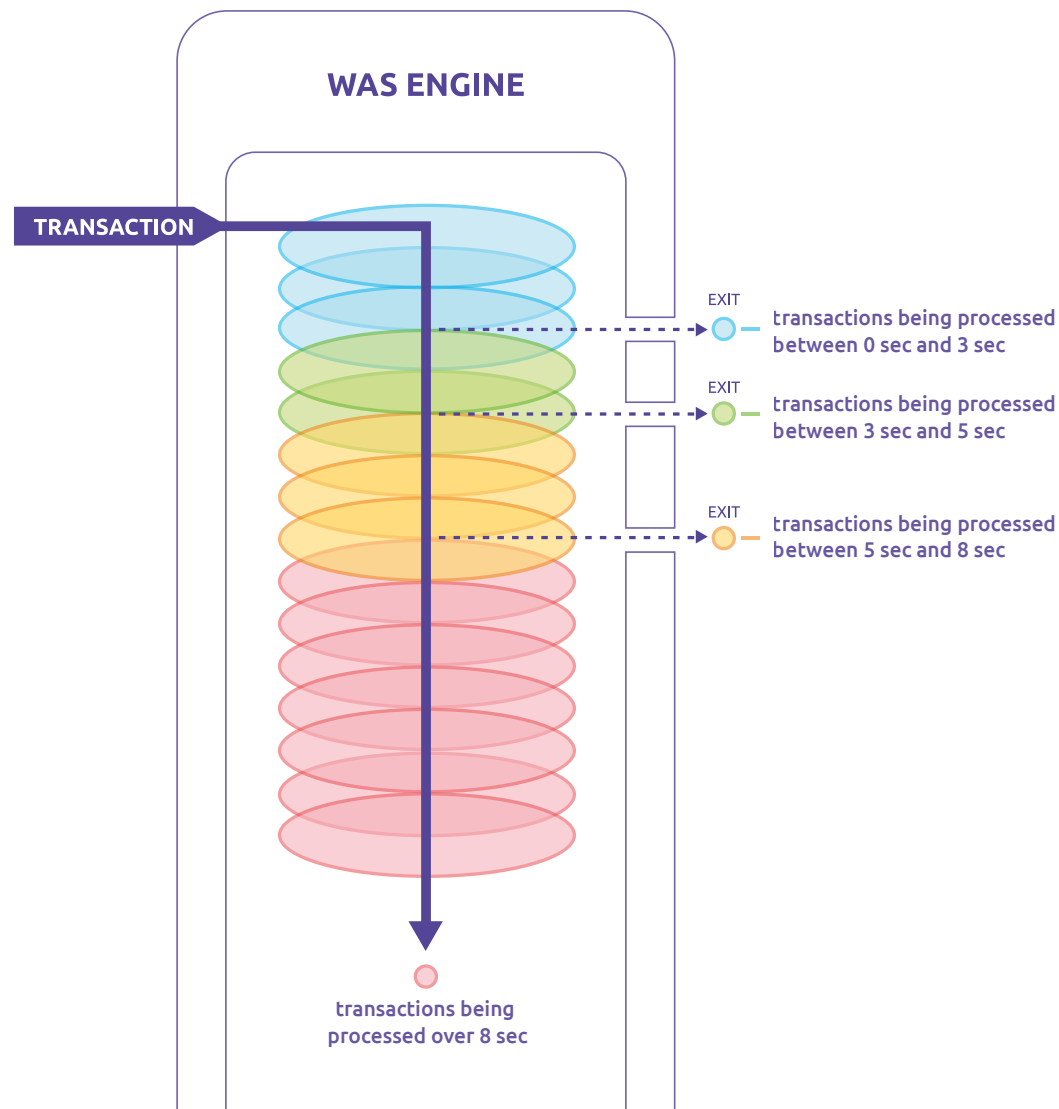
**How to keep the system
running stable even if
an administrator is away?**

In case of something unexpected happens and applications are getting into trouble, JENNIFER's self control features keep web applications running stable even if an administrator is out of seat.

Real-Time Transaction Monitoring

JENNIFER traces all of transactions processing from request entry to exit of web application server in real-time.

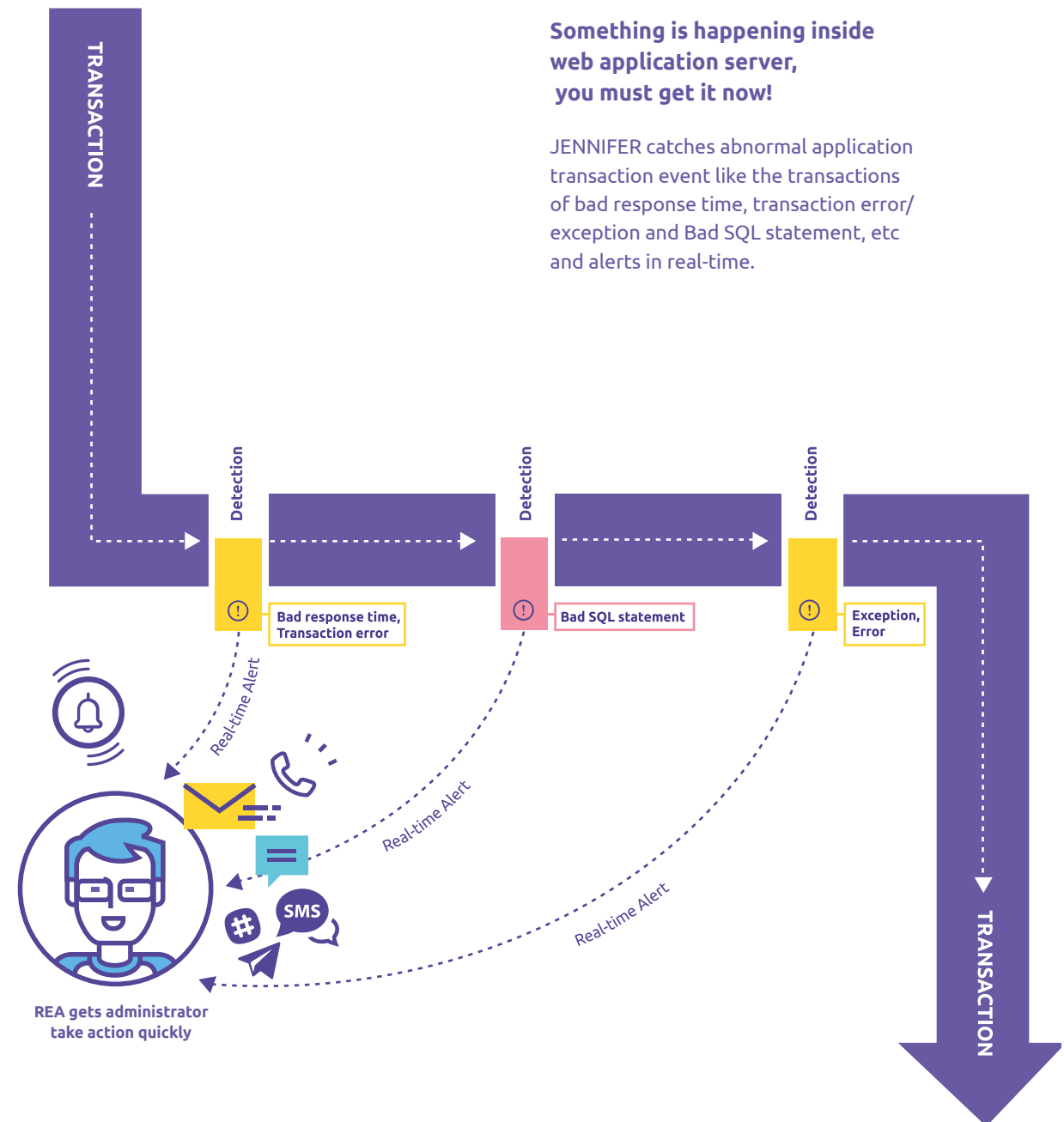
RTM shows colored transaction bar according to elapsed time of transaction being processed. This is an indicator that if your web application server has slow transactions or not in real-time.



Real-Time Event Alert

Something is happening inside web application server, you must get it now!

JENNIFER catches abnormal application transaction event like the transactions of bad response time, transaction error/exception and Bad SQL statement, etc and alerts in real-time.



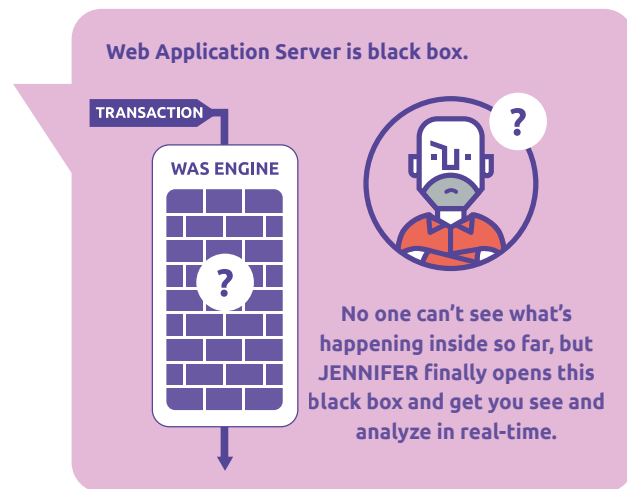
RDA

Real-Time Data Analytics

1

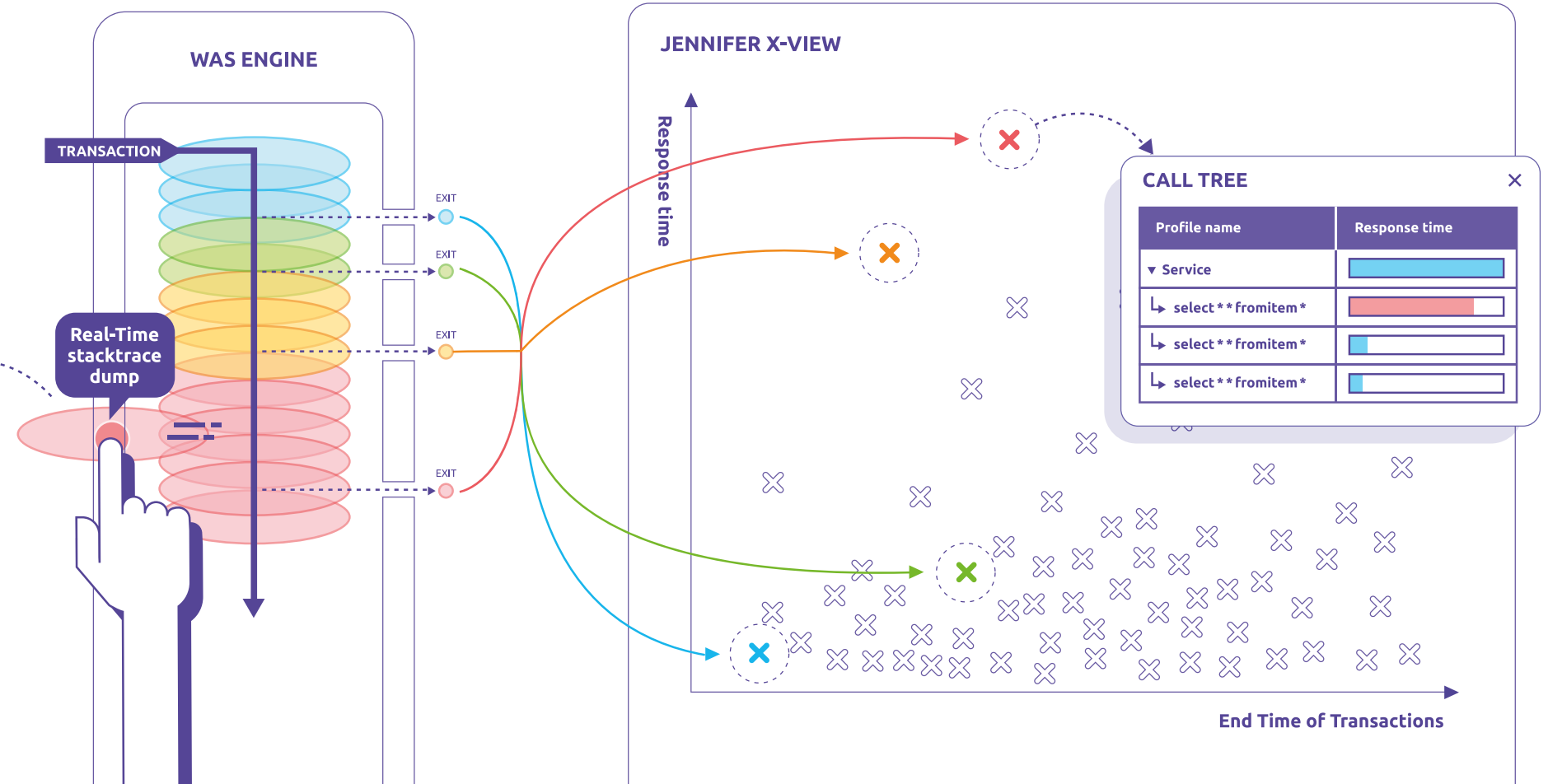
Active Service Data Analytics

Real-Time stacktrace dump of JENNIFER helps you to pinpoint abnormal method behavior in process of transactions inside application server.



ACTIVE SERVICE POPUP

Status	Application	Elapsed Time
Externalcall	ProductSearch.jsp	30sec
Externalcall	ProductSearch2.jsp	46sec
Externalcall	ProductSearch3.jsp	56sec
Externalcall	ProductSearch3.jsp	80sec



2

X-View Data Analytics

Begin to analyze in real-time. You don't have to wait any longer to analyze transactions after requests are finished.

Take a look at 'X' dots of upper area on X-View, and drag. 'X' includes all of details of each transaction to analyze as soon as transaction is done.

RTC

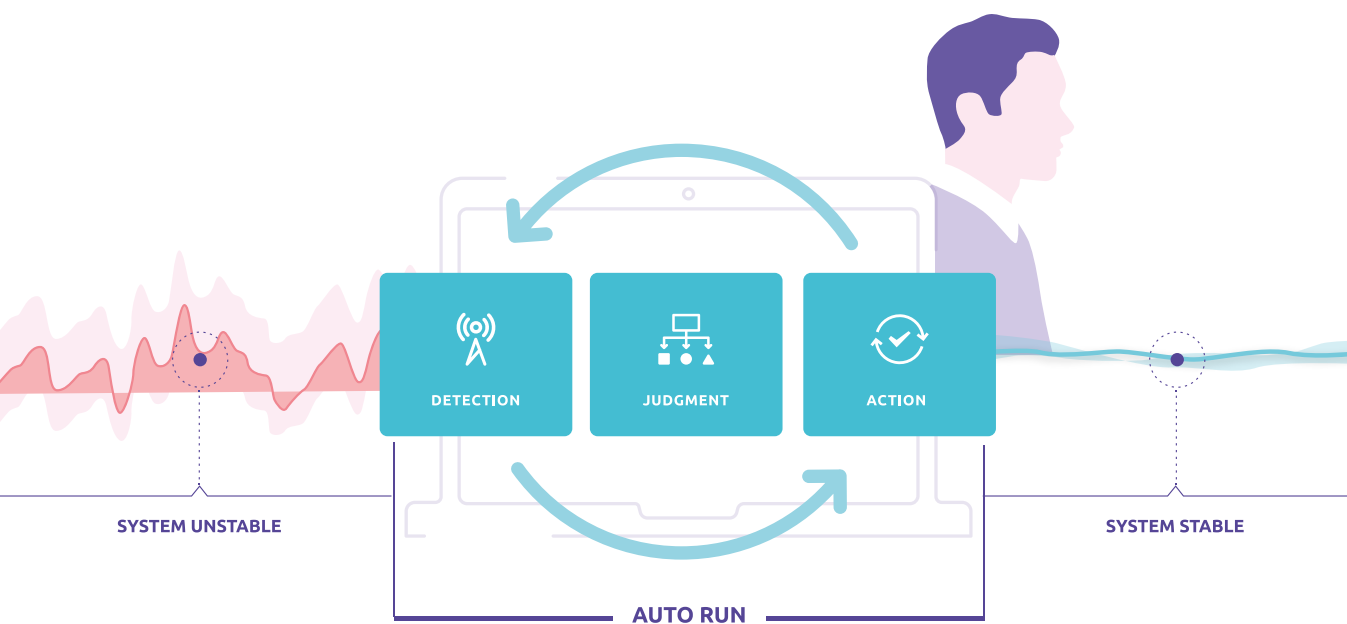
Real-Time Trouble Control

RTC features of JENNIFER guarantees the stable web system running in unexpected disaster situations.

1

AutoRun

AutoRun take emergency measures even if administrator is out of a seat. It runs predefined command when the web system gets into trouble.

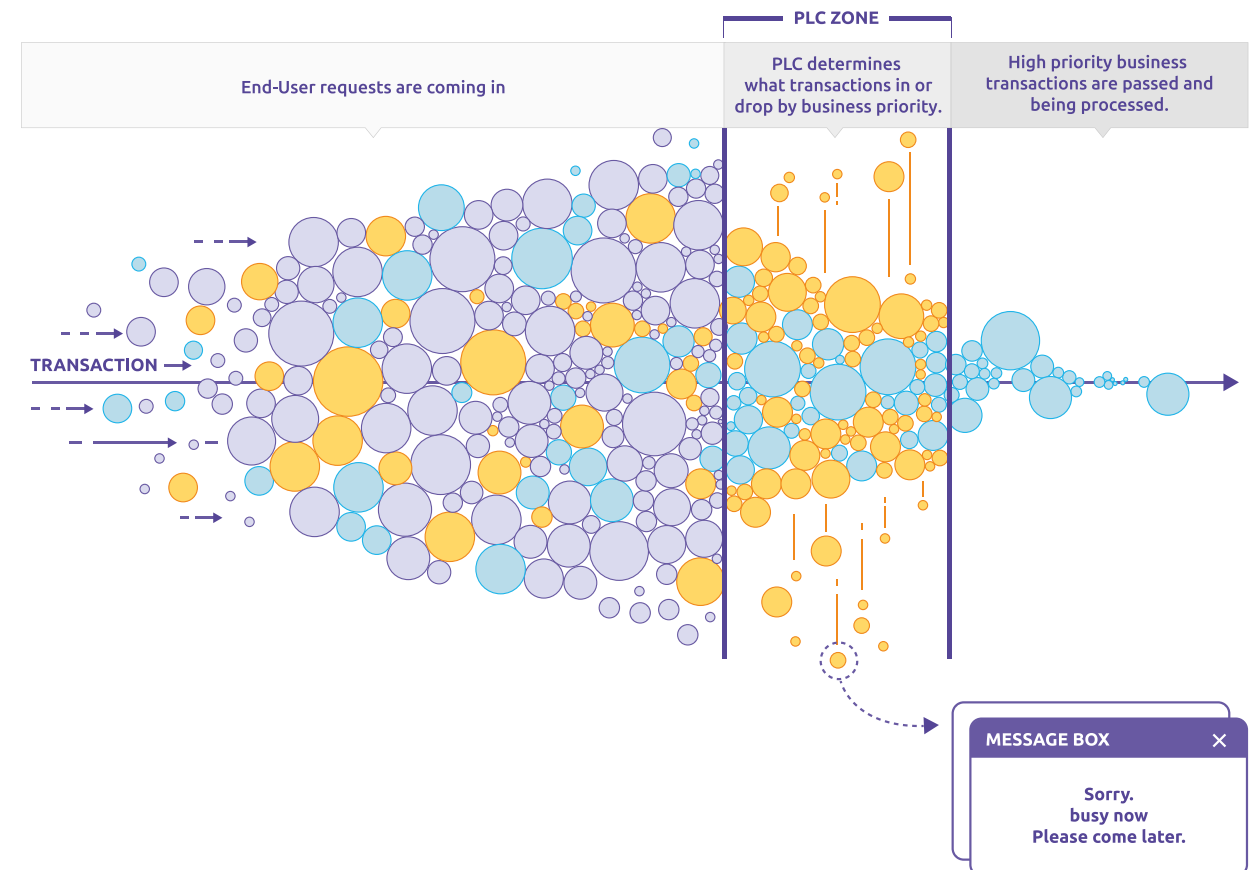


2

PLC

You could control the level of service load through a user-defined threshold. The feature would prevent the possibility of shutting down your entire system due to an unexpected explosion of the transactions (for instance, course application at school, ticket reservation service or events at the shopping mall.)

PLC could run relatively important service or limit the use of service that is not important when threshold reached the limit users defined.

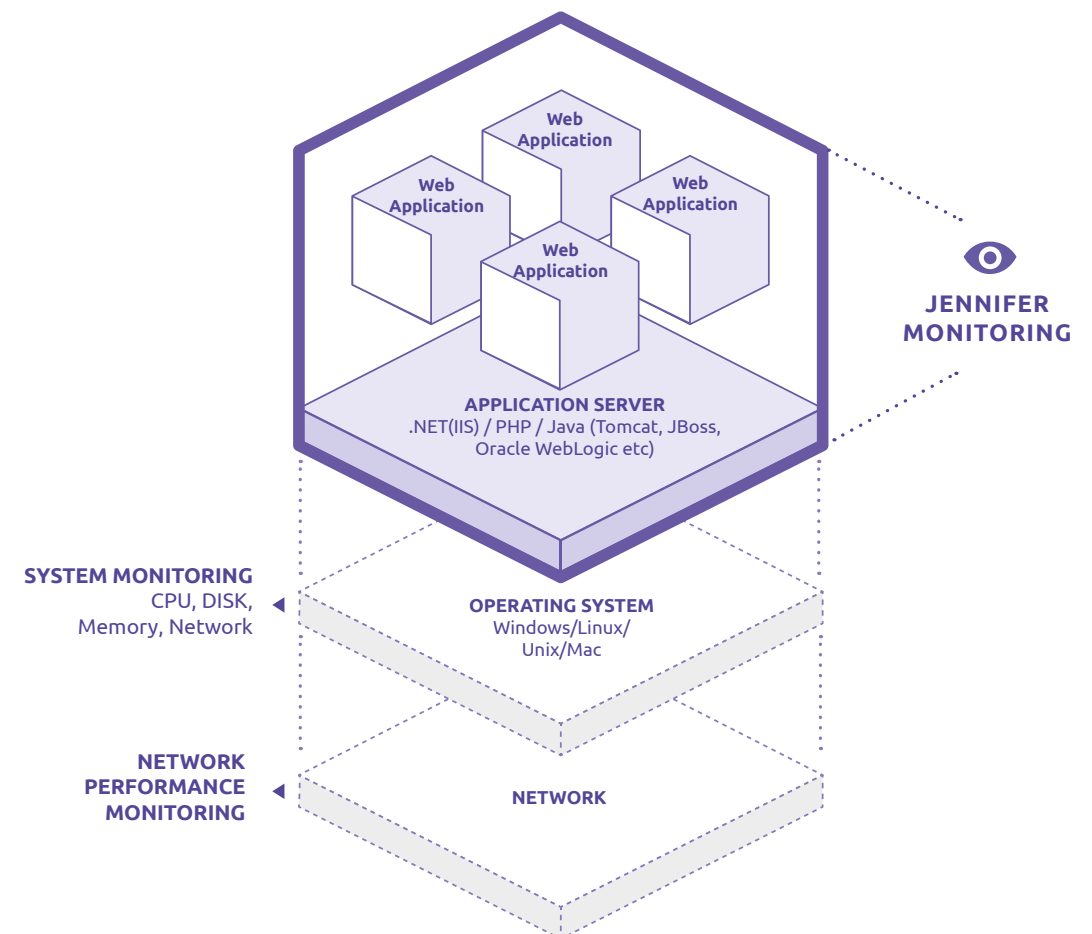


Fascinated by
intuitive beauty of
JENNIFER dashboard,
people often ask
why JENNIFER only
monitors Application
(Java, .Net, PHP).

Well,
we focus on
continuously improving
what we can do BEST.

What is JENNIFER for

The term monitoring can be interpreted differently by different people. There are several aspects of a system that can be monitored (OS Level Monitoring, Network Level Monitoring and Application Monitoring). JENNIFER IS an Application Monitoring (APM) tool, that can give you a complete visibility to your application and your application's transactions.



Real-Time Application Monitoring, JENNIFER Features Map

Below Features Map shows details of each main categories.



REAL-TIME TRANSACTION MONITORING

Topology View
Active Service
DB Connection
SQL Transaction
External Service transaction
Thread tracing
Heap Memory tracing
Source Deploy Detection
JDBC Action Tracing (Commit / Rollback, not close, Fetch)



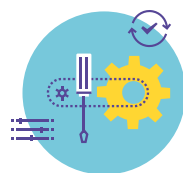
REAL-TIME EVENT ALERT

Exception detection
Error detection
Speed Meter
Event Threshold
OOM(Out of Memory)



REAL-TIME DATA ANALYTICS

Source Code comparsion analysis
File usage trace
Socket usage trace
Collection Monitoring
Smart Method Profiling
AutoStack Trace
Dynamic method profile
Dynamic stack trace
X-View
Class Analytics



REAL-TIME TROUBLE CONTROL

PLC
Script Autorun
Service dump
AutoStack Trace

REA

RTC

RDA

RTM

JENNIFER®

Support Environment

JAVA

Operating Systems

AIX 5.x, 6.x, 7.x (32bit, 64bit)
HP-UX 11.x 32bit, 64bit, Itanium 64bit
Oracle Solaris 2.8, 2.9, 10, 11 (32bit, 64bit)
Intel Linux 32bit, Red Hat Itanium 64bit
Microsoft Windows 2000, XP, 2003, 2008, 7, 8, 10
IBM iSeries(AS400) for WebSphere
IBM z/OS for WebSphere, zLinux

Application Server

BEA WebLogic 9.x, 10.x, 11.x, 12.x
IBM WebSphere Application Server 6.1, 7.x, 8.x
Tmaxsoft JEUS 4.x, 5.x, 6.x, 7.x
SUN Application Server 8.x, 9.x
Fujitsu Interstage 5.x, 6.x, 7.x, 8~11.x
Hitachi Cosminexus 7.x, 8.x, 9.x, 10.x
Sybase EAServer 4.x, 5.x
Apache Jakarta Tomcat 5.x, 6.x, 7.x, 8.x
Caucho Technology Resin 3.x, 4.x
Red Hat JBoss AS 5.x, 6.x, 7.x
GlassFish 2.x, 3.x, 4.x

Supported DB

MySQL, Microsoft SQL Server, PostgreSQL, DB2, Derby, Oracle Database, Sybase, MongoDB, HSQL, MariaDB, CUBRID

PHP

Operating Systems

Linux kernel version 2.6.18 or later
(RHEL 5 or later Ubuntu 7 or later)

Web Server

Apache 2
Any Server that can run with PHP-FPM
PHP Built-in web server

PHP Version

Apache module and PHP-FPM module based
5.2, 5.3, 5.4, 5.5, 5.6, 7.0(NTS)

GNU libcVersion

2.5 or later

Supported DB

MySQL, Microsoft SQL Server, PostgreSQL, Oracle, Maria DB

.NET

Operating Systems

Windows Server 2003 or later
(x86 and x64 included)

Web Server

IIS 6.0 or later

.NET Framework

.NET Framework 2.0 or later

Supported DB

Microsoft SQL Server, PostgreSQL, DB2, Oracle

©JENNIFERSOFT,INC.
All rights reserved.

Andri Diki
t. 085214010101
adk@jennifersoft.com

All trademarks, trade names, service mark and logos referenced herein belong to their respective companies.
This document is for your informational purposes only.
To the extent permitted by applicable law.

JENNIFERSOFT,INC.

